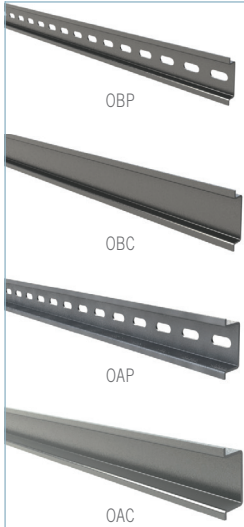




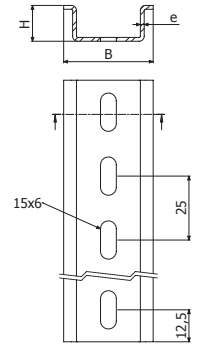
OBP / OBC / OAP / OAC



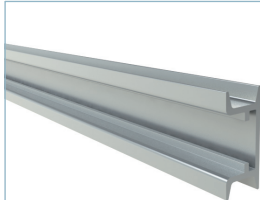
	e mm	B	H	GS	
				REF.	kg/m
OBP	1	35	7	2/0248	0,37
OBC	1	35	7	2/7214	0,41
OAP	1,5	35	14	2/0250	0,69
OAC	1,5	35	14	2/7227	0,73



L = 2 m (6,7 ft)



OR



	B		H		L		AL	
	mm	inch	mm	inch	m	ft	REF.	kg/m
OR 2M	35	1 3/8	15	3/5	2	6,6	2/9805	0,40
OR 3M	35	1 3/8	15	3/5	3	10	2/9806	0,40

